

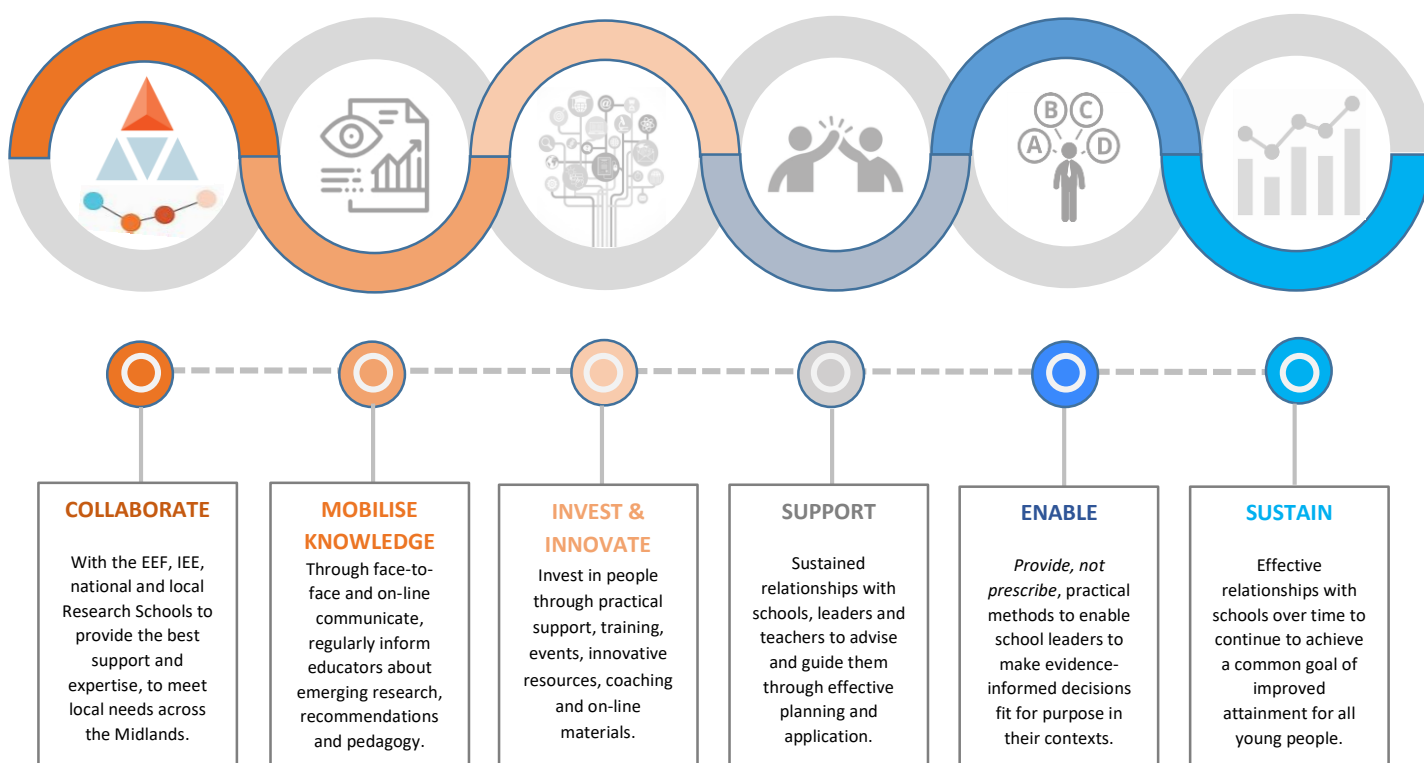
A new Research School...



...what does that involve?

In the busy life of a school it can be a challenge to keep abreast of the latest research or emerging evidence-informed recommendations. Through resources, training and guidance, Research Schools support school leaders and classroom teachers to effectively and sustainably turn research into evidence-based practice, to improve student outcomes in their bespoke contexts.

A common misconception is that as a Research School, we will be undertaking all of the research ourselves. Whilst we may be involved in a number of the Education Endowment Foundation's Promising Projects or research trials at the Staffordshire Research School, our teachers are already pretty busy, so we leave the impact assessments and number crunching to the experts, to allow us to focus on teaching effectively and raising achievement!



@JTStaffsRSch

To receive the most up to date evidence-based resources, research, blogs, training and career development opportunities **you can sign up for our FREE monthly newsletter [here](#).**

<https://researchschool.org.uk/staffordshire/>



