

Developing Effective Leadership of Teaching Assistants (DELTA)



DELTA is a ground-breaking project aimed at meeting the needs of children in Bristol who are most at risk of underachieving, both historically and in light of the impact of COVID-19 on learning.

About the project

Bristol City Council have partnered with the Education Endowment Foundation (EEF) and West Somerset Research School to work alongside Bristol schools in Developing the Effective Leadership of Teaching Assistants.

Through a collaborative approach to evidence use across the City, participating schools will mobilise findings, insights and recommendations from ten years of EEF guidance on how to generate the most impact from the City's 2150+ Teaching Assistants.

Combining both high-impact practices for training & deploying Teaching Assistants and processes for effective implementation, school leaders will explore, prepare and deliver a context-specific TA strategy for their setting.

Now more than ever, schools are looking to identify a small number of high-leverage priorities to implement as 'best bets' for improving pupil outcomes.

In doing so, schools will establish a process for co-developing a long-term sustainable eco-system of evidence-informed school improvement for Bristol.

Friday 11th June 2021 9.00am - 12.30pm

FREE

Exclusive to Bristol Head Teachers, CoG's and CEOs

Register
Here



Education
Endowment
Foundation



Research
Schools Network



West Somerset
Research School

Developing Effective Leadership of Teaching Assistants (DELTA)

What does the programme involve?

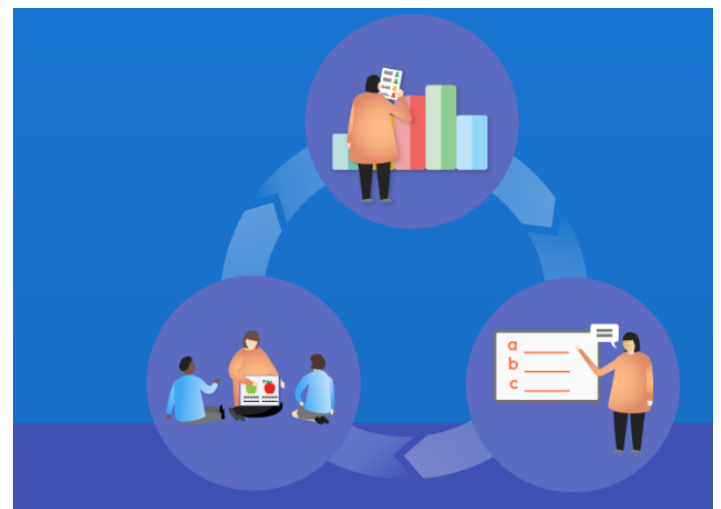
- A nine module programme of carefully spaced professional learning, starting in June 2021 running to July 2022.
- Deep exploration of the evidence on TA deployment and Effective Implementation in Schools, focusing on clear actionable recommendations with input from international experts in the field.
- Tackling head-on common implementation 'Pinch Points' for embedding new TA deployment practices in your school
- Self-directed learning throughout the programme that is designed to close the 'knowing-doing gap' in your own context
- National and local exemplification from school leaders who have applied the evidence in real-world settings, sharing their implementation journey and insights into the process of change.
- Facilitated Peer Learning Group (PLG) sessions following each training input to reflect on, discuss and consolidate new knowledge and intersession implementation tasks.
- Ongoing Implementation support, including enhanced support for schools serving the most deprived communities in Bristol (more information to follow).

DELTA programme

June 11th 2021: Launch Event

September 2021 - July 2022:
5x half day training sessions + intersession tasks.

5x follow up PLG sessions
(precise dates, times and locations tba)



Friday 11th June 2021 9.00am - 12.30pm

FREE

Exclusive to Bristol Head Teachers, CoG's and CEOs

[Register Here](#)

