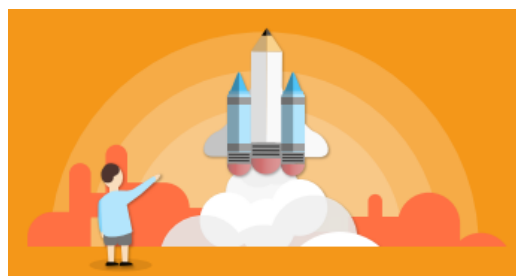


## Derby Research School Events 2021

# Early Years Twilight Series



Join us for this series of communication events looking at the principles of developing an evidence-rich approach to improve teaching and learning in Literacy in the Early Years Phase

Our Evidence Leaders in Education for Early Years are delivering a series of communication events to help practitioners engage with two critical documents: the EEF [Preparing for Literacy Guidance Report](#) and [Early Maths Guidance Report](#)

### 23<sup>rd</sup> February 4pm-5pm: Developing Early Reading

Facilitator: Aimee Allen

### 1<sup>st</sup> March 4pm-5pm: Supporting Early Language Development

Facilitator: Leanne Oswin

### 16<sup>th</sup> March 4pm-5pm: Ensuring a Continuous Provision Environment

Facilitator: Leanne Oswin

### 29<sup>th</sup> March 4pm-5pm: Developing Early Writing

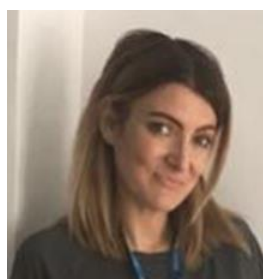
Facilitator: Aimee Allen

### 24<sup>th</sup> May 4pm-5pm: Early Maths

Facilitator: Nicol Winfield

### 21<sup>st</sup> June 4pm-5pm: Maximising Outdoor Learning

Facilitator: Aimee Allen



**Aimee Allen**

Derby Research School ELE and Early Years Practitioner at Portland Spencer Academy



**Nicol Winfield**

Derby Research School ELE, Maths Mastery Specialist with the Maths Hub East Midlands West and Early Years Leader at Wyndham Primary Academy



**Leanne Oswin**

Derby Research School ELE and Senior Leader Early Years Practitioner at Portland Spencer Academy

To reserve your place, book [here](#)

[For More Information about Events with the Derby Research School](#)