

# Improving Literacy in Secondary School Subjects

**\*NEW\* Modular Programme**

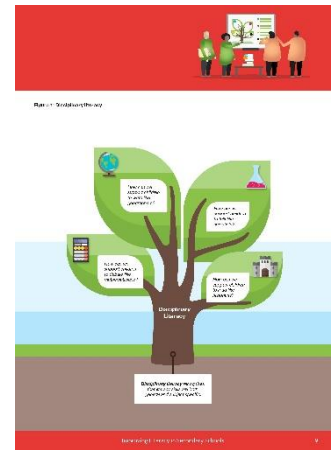
**\*NEW\* Modular Programme £295 or £50 per session – [Click Here](#)**

Join us on this 6 module course where we will be focusing on the practical application of evidence based recommendations with guided gap tasks and follow on support.

**“Literacy is key to learning across all subjects in secondary school and a strong predictor of outcomes in later life. Disciplinary literacy is an approach to improving literacy across the curriculum that emphasises the importance of subject specific support.” EEF**

The first four modules will focus on the practical application of recommendations 1,2,3,5 from the EEF’s Improving Literacy in Secondary Schools Guidance Report. We will then delve into how the research can provide strategies for leaders and staff to integrate into their teaching and settings.

Throughout the final two modules we will explore how to embed strategies into practice across departments and whole school focusing on key ‘active ingredients, as we create a clear strategic logic model for sustained implementation using the EEF’s Putting Evidence to Work: A School’s Guide to Implementation Guidance Report.



## IMPROVING LITERACY IN SECONDARY SCHOOLS Summary of recommendations



|           |                                            |
|-----------|--------------------------------------------|
| Session 1 | 28 <sup>th</sup> September 8.30am – 3.00pm |
| Session 2 | 5 <sup>th</sup> October 1.00pm – 4.00pm    |
| Session 3 | 13 <sup>th</sup> October 1.00pm – 4.00pm   |
| Session 4 | 5 <sup>th</sup> November 1.00pm – 4.00pm   |
| Session 5 | 19 <sup>th</sup> November 8.30am – 3.00pm  |

### Who:

Secondary Curriculum Leaders, Literacy Leads, Senior Leadership

**Venue:** George Spencer Academy

**Facilitators:** Amy Ford, Sarah Ryce

**Booking Details:** Please find [Booking Form Here](#) Further Details on our website: [Click here](#)

Derby Research School | Wyndham Primary Academy| Wyndham Street | Alvaston | Derby | DE24 0EP