

MAKE THE DIFFERENCE

for your pupils



Greenshaw
Research School



COURSE PROGRAMME 2021 - 22

Our team



Phil Stock (Director of Research School) is a Deputy Headteacher responsible for Teaching and Learning and CPD, former Head of English



Ro King (Deputy Director of Research School) is an Assistant Headteacher and SENCo responsible for Inclusion, former Safeguarding Designate and Head of House



Foye Weatherhead (Research Lead) is an Assistant Headteacher responsible for curriculum, former Head of History



Tristan Evans (Research Lead) is a Science teacher and a former Head of Year with an expertise in cognitive science and its application in the classroom



Sarah Allison (Research Lead) is a KS3 Science coordinator with an expertise in professional development

Evidence Leads in Education



Amy Carlile is a Director of Training and Professional Development at LEO Academy Trust, supporting early career teacher development and the implementation of action research projects and a former primary Deputy Headteacher



Matthew Courtney is a KS1 lead and Early Reading School Improvement Advisor, currently completing a masters in Education with particular interests in reading and diversity in children's literature



Steph Keenan is a secondary Head of English and Curriculum Development, currently completing an MA in Expert Teaching



Tom Needham is Head of English and Director of Research at his secondary school, having authored many articles for ResearchED as well as contributions to guides in Explicit and Direct Instruction and Literacy. Currently writing a book about the application of cognitive science to the English classroom



Lekha Sharma is a primary school Vice Principal, currently undertaking a masters in Education focused on reading outcomes in primary, having published a book entitled 'Curriculum to Classroom'

Greenshaw Research School is part of a national network of 39 research schools who partner with and are part-funded by the Education Endowment Foundation (EEF) and the Institute for Effective Education (IEE).



Education
Endowment
Foundation



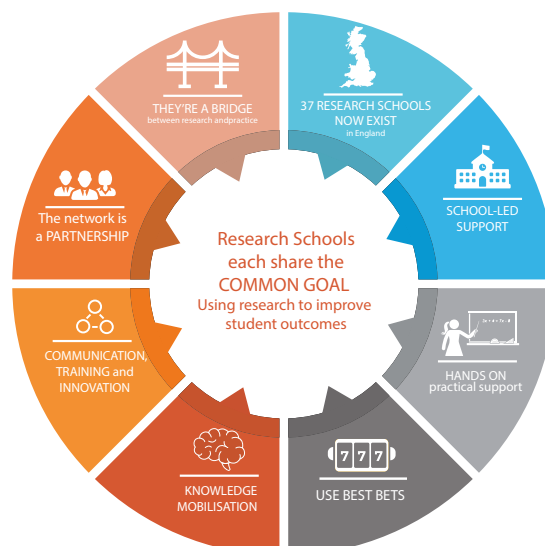
Research schools have been commissioned to mobilise, disseminate and provide guidance about the latest evidence of what works in schools, particularly in relation to disadvantaged pupils.

Greenshaw Research School is at the forefront of the evidence-led movement across the education sector, disseminating and supporting the interpretation of evidence to other schools across London and the South East.

The aims of Greenshaw Research School are to:

- support other schools to make use of evidence-based programmes;
- offer training and professional development to leaders in schools using the EEF guidance reports and toolkits;
- guide school leaders as to the best available evidence on successful implementation.

We are a not-for-profit organisation, committed to the EEF's vision to improving the educational attainment of the poorest pupils in English schools.



Want to develop your evidence - informed practice and decision making?



Follow us on twitter @GreenshawR

Check out our courses which offer a wide range of remote and in person learning opportunities suited to your needs.

Discounts & Offers



Please contact us for further information on exclusive offers, like the earlybird discount for booking in advance.

researchschool.org.uk/greenshaw



Making the Difference for Disadvantaged Pupils

Presenters: Phil Stock and Ro King

The gap may have widened, but the link between family income and educational attainment **can** be broken

The programme is made up of 6 modules with a blend of self-directed, remote and face-to-face professional learning. It also includes an individual coaching session to consider your proposal to support disadvantaged learners.



Programme aims

- Use a tiered approach that meets the needs of all learners
- Identify key priorities within teaching & learning, targeted support and whole school strategies
- Apply the principles of effective implementation to embed and sustain the processes, practices and programmes in your strategy;
- Monitor and evaluate the impact of your strategy to adapt / sustain approaches according to pupil needs

Course Dates

Sign up via googleforms >> bit.ly/GreenshawR56

Module 1 – pre-reading/task

Module 2 – Thursday 18th November 2021, Sutton Life Centre, 9.30-3pm

Module 3 – Self-study – data tools

Module 4 – Thursday 13th January 2022, online, 2-4pm

Module 5 – Wednesday 23rd February 2021, online, 2-4pm

Module 6 – Thursday 10th March 2022, Sutton Life Centre, 9.30-3pm



£350 per person, £525 for 2

Early bird offer is 10% off
Contact us for more details

Cognitive Science in the classroom

Presenters: Tom Needham and Steph Keenan

Research can tell us a lot about what approaches to take in the classroom that will enable our pupils to acquire and retain knowledge

This course is aimed at teachers and leaders who want to understand more about the science behind learning. It will explore the research and support you to design a way to effectively implement these in the classroom.

Programme aims

- The evidence base around cognitive science and how children learn
- How memory supports pupils' learning
- What strategies might help understanding
- The importance of cognitive load theory and explicit instruction
- Spaced practice, interleaving and dual coding
- Applying the principles of cognitive science to the classroom

Course Dates

Sign up via googleforms >> bit.ly/GreenshawR52

Session One - 1st February 2022 - Online - 2-4pm

Session Two - 22nd March 2022 - Online - 2-4pm

Session Three - 21st June 2022 - Online - 2-4pm

Session Four - TBC



£195 per person, £250 for 2

Early bird offer is 10% off
See web site for more details

Evidence-informed curriculum development

Presenters: Foye Weatherhead, Lekha Sharma

Curriculum development is at the heart of school improvement, both in terms of raising academic achievement but also other valuable aspects of pupil growth



This programme is aimed at school leaders with curriculum responsibility, whether in subject areas or across the whole school. It will explore the evidence base and how to design and implement long term and sustainable curriculum change.

Programme aims

- What is the evidence base?
- What are the common misconceptions?
- What are the key principles of curriculum design?
- How can curriculum be aligned with assessment?
- How do you take account of the OFSTED framework?
- What are the barriers to implementing change?
- What does long-term, sustainable planning look like?

Course Dates

Sign up via googleforms >> bit.ly/GreenshawR50

Session 1 – Thursday 25th November 2021, Sutton Life Centre, 9.30-3pm

Session 2 – Thursday 14th December 2021, online, 2-4pm

Session 3 – Thursday 3rd March 2022, online, 2-4pm

Session 4 – Thursday 16th June 2022, Sutton Life Centre, 9.30-3pm



£325 per person, £495 for 2

Early bird offer is 10% off
Must be booked by 31st August 2021

Improving Secondary Literacy

Presenters: Phil Stock, Ro King

The attainment gap is arguably a literacy gap: improve pupils' literacy and you will improve their outcomes

This course is aimed at school leaders with literacy responsibility, including co-ordinators, curriculum leaders and teachers. The training will explore the seven recommendations from the EEF Secondary Literacy guidance report.

Programme aims

- What is the evidence base for improving outcomes?
- What is disciplinary literacy and why is it a priority?
- What are the best strategies to improve reading, writing and oracy?
- How to identify priorities and devise effective interventions?
- How to plan for long-term improvement across the school?

Course Dates

Sign up via googleforms >> bit.ly/GreenshawR53

Session 1 – Thursday 21st October 2021, Sutton Life Centre, 9.30-3pm

Session 2 – Thursday 9th December 2021, online, 2-4pm

Session 3 – Thursday 27th January 2022, online, 2-4pm

Session 4 – Thursday 24th March 2022, Sutton Life Centre, 9.30-3pm



£325 per person, £495 for 2

Early bird offer is 10% off
Must be booked by 15th September 2021

Effective Professional Development

Presenters: Amy Carlile and Tammie Wisnia



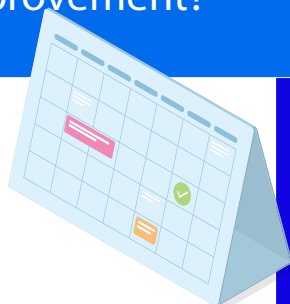
Join us for a course exploring the evidence behind Effective Professional Development, and the crucial role it plays in improving classroom practice and pupil outcomes.



Key considerations:

- What make powerful professional learning?
- What are the key mechanisms, and what do they look like in practice?
- What do school leaders need to consider when designing PD programmes?
- How can professional development support wider school improvement?

Course Dates:



31st March 2022 - All day

4th May 2022 - Online

23rd May 2022 - Online

23rd June 2022 - All day

Twilight session :
21st February 2022
between 4-5pm

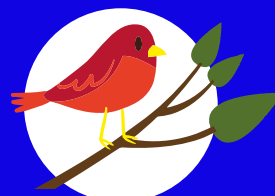
Course cost:

Cost would be £325 per person
£495 for 2 people from the same school.

10% off

Early bird offer

See website for more info



Sign up via googleforms >> bit.ly/GreenshawRS65
Twilight Sign up: >> bit.ly/GreenshawRS66

Bespoke Support

If you want to know more, please do contact us at Greenshaw research school to discuss how we can support you.

Principles of Powerful Learning



This course is aimed at early career teachers and covers 10 principles of Powerful Learning. These principles are drawn from cognitive science and are split into two categories – introducing learning and consolidating learning. Each session is an hour long and includes a short pre-reading task, a follow up activity and selective wider reading to help deepen understanding. This programme is ideal for new or developing teachers keen to improve their understanding of how to apply insights from cognitive science into the classroom.

Pupil Premium Review



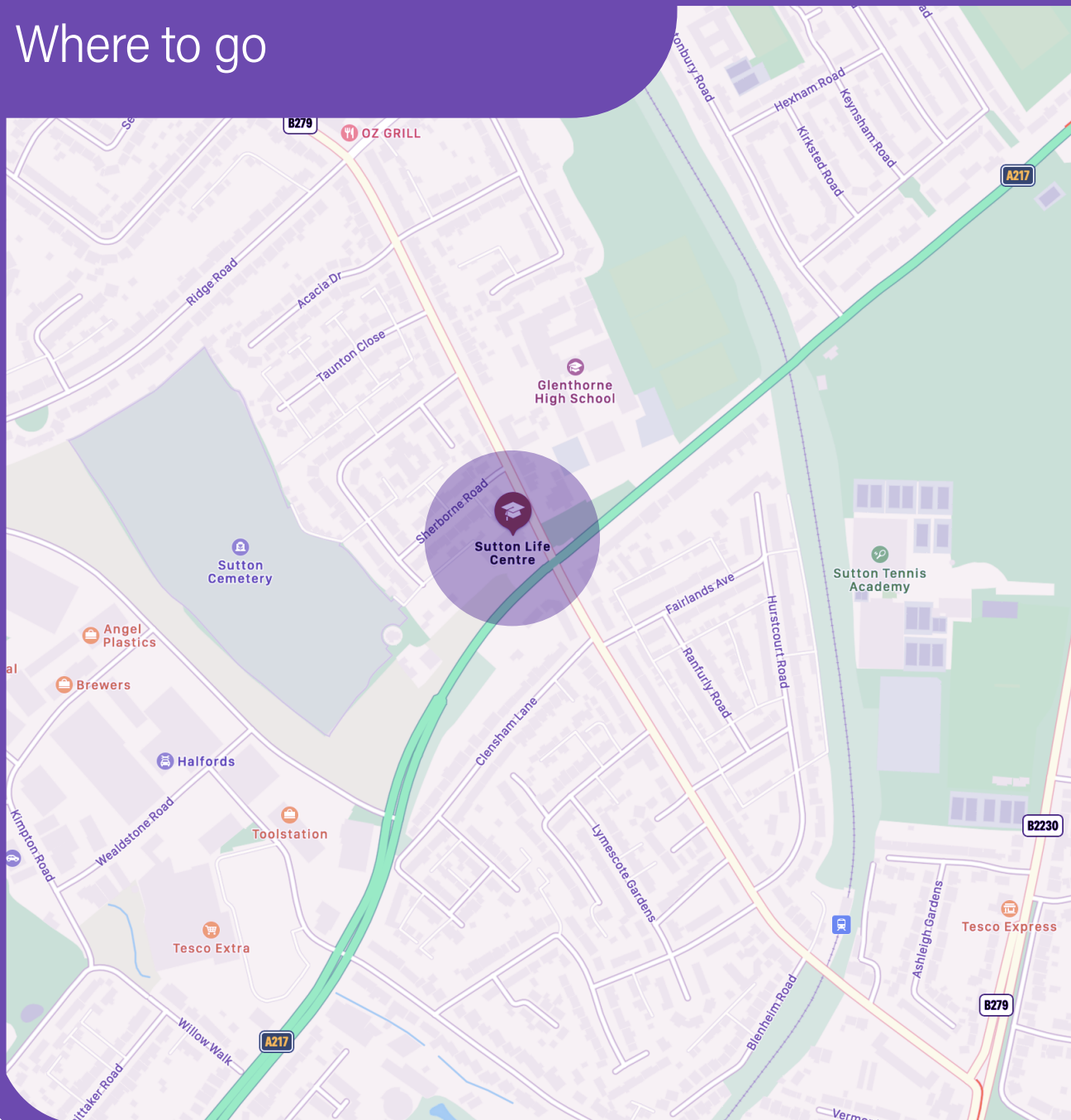
Pupil Premium Reviews involve a half-day visit to your school to support your work with disadvantaged pupils. The review involves observing learning in lessons and talking to different stakeholders about their understanding of disadvantage and how it is being addressed in your setting. The findings are discussed with the leadership team at the end of the day and written up in more detail as report shortly afterwards.

Partnership Work



As well as offering a core programme, Greenshaw Research School can also work with your school, MAT or Local Authority on more bespoke areas of development. We are currently working on a number of partnership projects with schools in the London and South East region, in particular around supporting disadvantaged pupils, developing reading and literacy, and Principles of Powerful Learning as part of the Early Careers Framework. Please get in touch with us to discuss how we can support your specific development needs.

Where to go



Sutton Life Centre

The Sutton Life Centre is a community centre in Sutton, South London. It is an £8 million facility using audiovisual equipment to make young people more "street smart" and better able to deal with the dangers and risks they face in life.

Address: 24 Alcorn Cl, Sutton SM3 9PX

Phone: 020 8296 1287