



**Derby
Research
School**

Supported by the Education Endowment Foundation

Training & Events 2024/25

Welcome

Welcome to Derby Research School, where we are committed to fostering a culture of excellence and innovation in education through our CPD offer. Our sessions are meticulously designed to empower educators with the latest research-based practices, ensuring that every teacher can enhance their professional skills and, ultimately, improve student outcomes.

At Derby Research School, we understand that effective teaching is at the heart of student success. Our CPD offer encompasses a wide range of training opportunities tailored to meet the diverse needs of educators across all levels and disciplines. From novice teachers to experienced practitioners, our programs provide valuable insights and practical strategies that can be immediately applied in the classroom. Our CPD sessions are led by expert facilitators who bring a wealth of knowledge and experience, ensuring that each participant gains a deep understanding of the subjects covered.

By participating in Derby Research Schools' CPD offer, educators will not only stay abreast of the latest educational research but also become part of a supportive professional community. We believe in the power of collaboration and shared learning, and our sessions provide ample opportunities for networking and peer support.

Join us at Derby Research School and take the next step in your professional journey. Together, we can create an inspiring and effective learning environment for all students.



Tammy Elward
Director Derby Research School
telward@spencertrust.org.uk



Amy Ford
Dept. Director Derby Research School
aford@spencertrust.org.uk



Georgina Wild
Coordinator
gwild@spencertrust.org.uk

Themes

Literacy p3

Tackling Educational Disadvantage p9

School Leadership & Implementation p18

Learning Behaviours p21

Mathematics p27

Using Research Evidence p29

Primary Subject Leader Networks p33

School Support

PP Reviews p35

Bespoke Training p36

Our Offer Explained



We've curated a range of opportunities for teachers and leaders to delve into the evidence base focusing on key themes. Hook into each theme in the way that suits you best and share with colleagues.

THEME: Literacy





THEME: Literacy

Training Events

Prioritising Oracy in the Classroom PRIMARY **19th September**

Amy Ford & Anna West

Cost: £110



Prioritising Oracy in the Classroom SECONDARY **26th September**

Amy Ford & Anna West

Cost: £110



Diagnostic Assessment for Literacy Reading **2 day course - 25th June & 3rd July**

Amy Ford and Nic O'Donnell

Cost: £250



Are you eligible for a discounted or fully funded place? [LEARN MORE](#)



THEME: Literacy



YouTube Videos

- **Supporting Writing for Stamina**
18th September
Tammy Elward, Director of DRS
- **Supporting EAL Learners**
10th October
Natalie Campbell, ELE
- **Ensuring Progression for Writing Across KS1 to KS2 - 23rd October**
a Case Study- Tracey West, ELE



- 1** **W/C 16th September**
Introduction to the Research School Team and the Podcast Series, Including RS Offer and Key Dates
- 2** **W/C 23rd September**
Addressing disadvantage: attendance to school, attendance to learning.
Marc Rowland
- 3** **W/C 30th September**
Moral Imperative of Being a Literacy Lead - Key Learning and Challenges to Navigate and Support Structures
Sarah Green
- 4** **W/C 7th October**
The importance of Oracy: Learning Through Talk
Alice Stott, Voice21
- 5** **W/C 14th October**
The Importance of Disciplinary Literacy
Nisha Tank, The National Literacy Trust
- 6** **W/C 21st October**
Diagnostic Assessment
Vanessa Hall, Greenwood Academies Trust

To get weekly updates for our new podcast series, register here



Prioritising Oracy in the Classroom: Primary Oracy Course

Cost: £110

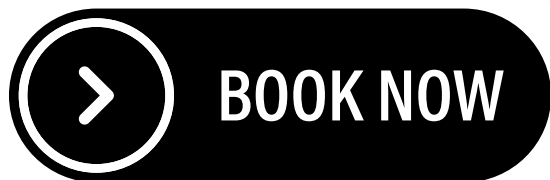
Join our transformative Primary Oracy Course, designed to empower educators with the skills and strategies needed to cultivate confident, articulate students. This course delves into the foundational principles of oracy, providing practical techniques for enhancing students' speaking and listening abilities across the curriculum.

Participants will explore the latest research, engage in hands-on activities, and develop tailored lesson plans that foster a dynamic and inclusive classroom environment. By prioritizing oracy, teachers will not only improve students' communication skills but also boost their overall academic achievement and social-emotional development.



Learn how...

- **oracy can be easily be interwoven into your teaching of other subjects**
- **to support the development of oracy with a range of progression of language structures tailored to benefit your setting**



Who: This event is open to all practitioners from Primary education

When: 19th September 2024, 8.30am-3.30pm

Where: Spencer Conference Centre (formally Portland Conference Centre),
Westwick Road, Nottingham, NG8 4BW

Equip yourself with the tools to elevate your students' voices. Enroll in Derby Research School's Primary Oracy Course and make a lasting impact on your teaching practice and your students' futures.

Accountable Talk: Secondary Oracy Course



Join Derby Research School's dynamic Accountable Talk Course, specifically designed for secondary educators committed to fostering meaningful, rigorous classroom discussions.

This course offers in-depth insights into the principles of accountable talk, equipping teachers with practical strategies to enhance students' critical thinking, communication, and collaboration skills.

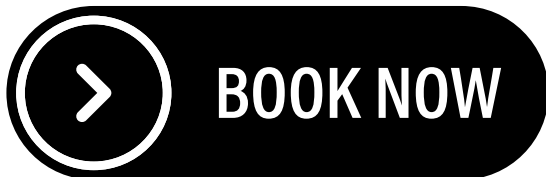
Participants will delve into cutting-edge research, engage in interactive workshops, and develop actionable plans to implement accountable talk practices across various subjects. By prioritizing accountable talk, educators will not only improve student engagement and academic performance but also cultivate a classroom culture of respect, inquiry, and intellectual growth.

Empower your students to think deeply and communicate effectively.

Learn how...

- to support a whole school approach to Oracy through practical audits, tools, case studies and strategies
- to ensure high quality talk is well-structured and guided by teachers in your setting,
- and be able to support your staff teams to promote the use of academic talk through a disciplinary literacy lens.

Cost: £110



Who: This event is open to all practitioners from Secondary education

When: 26th September 2024, 8.30am-3.30pm

Where: Spencer Conference Centre (formally Portland Conference Centre),
Westwick Road, Nottingham, NG8 4BW

Enrol in Derby Research School's Accountable Talk Course for Secondary Educators and transform your classroom dialogue for lasting educational impact.

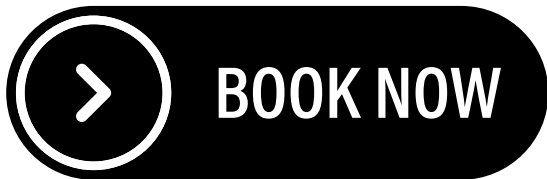
Diagnostic Assessment for Literacy Reading



Cost: £250

The Diagnostic Assessment for Reading course aims to equip educators with the skills and knowledge needed to effectively assess and improve students' reading abilities.

- **Understanding Diagnostic Assessment:** Learn the principles and importance of diagnostic assessments in reading.
- **Assessment Tools and Techniques:** Gain familiarity with various tools and techniques used to diagnose reading difficulties.
- **Interpreting Results:** Develop skills to analyse assessment results to identify specific reading challenges.
- **Intervention Strategies:** Explore evidence-based interventions and instructional strategies tailored to students' needs.
- **Monitoring Progress:** Learn methods to track students' progress and adjust teaching strategies accordingly.



Who:

When: 25th June & 3rd July 8.30am-3.30pm

Where: Spencer Conference Centre (formally Portland Conference Centre),
Westwick Road, Nottingham, NG8 4BW

THEME: Tackling Educational Disadvantage



THEME: Tackling Educational Disadvantage

Training Events

Creating an Evidence Informed Pupil Premium Strategy

11th December

Marc Rowland

DERBY SECONDARY SCHOOLS ONLY

Cost: Funded



Day 1: How to Create an Evidence Informed Pupil Premium Strategy 19th November

Tammy Elward and Amy Ford

Cost: £110



Day 2: How to Monitor and Evaluate Your Pupil Premium Priorities 14th January

Tammy Elward and Amy Ford

Cost: £110



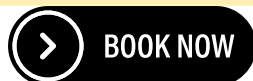
Are you eligible for a discounted or fully funded place? [LEARN MORE](#)



THEME: Tackling Educational Disadvantage

Webinar Events

**Pupil Premium Panel
Lessons Learned and
Success as a Lead**
27th November



Cost: Free



**Why adaptive teaching and
formative assessment is
integral for PP/SEND
students (Case Study)**
4th December



YouTube Videos

- **The Disadvantage Calculator**
with Tom Fitzjohn
- **5 Steps to Planning your PP Strategy,**
with Tammy and Amy
- **The importance of evaluation at the
beginning of your PP strategy**



NEW

PODCAST



1

W/C 11th November

Every Teacher a Teacher of PP, how do we create structures to train and support staff

2

W/C 18th November

New to the PP role, what are the top tips, key learning from school leaders in a number of phases

3

W/C 25th November

Working with parents, how to engage our reach harder PP communities

4

W/C 2nd December

PP a peer review model - what does this look like

5

W/C 9th December

Working with governors to support your PP link

6

W/C 16th December

Planning, enacting and evaluating an evidence informed PP strategy primary & secondary focus, with Marc Rowland

To get weekly updates for our new podcast series, register here





Creating an Evidence Informed Pupil Premium Strategy

The aim of this **one day** session is to support school leaders in Derby plan, enact and evaluate their evidence informed pupil premium strategy.

It will be learning from our work nationally, particularly focused on areas of high levels of disadvantage and low prior attainment. It will be rooted the realities of helping people to thrive in challenging contexts.

Cost: Fully Funded



Who: Derby city secondary school headteachers

When: 11th December 9.00am-3.00pm

Where: George Spencer Conference Centre, NG9 7JA

Facilitator: Marc Rowland

Bridging the Gap Day 1: How to Create an Evidence Informed Pupil Premium Strategy



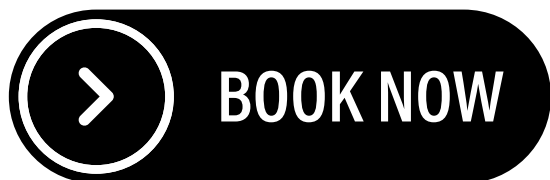
Cost: £110

Unlock the potential of every student with Derby Research School's Pupil Premium Disadvantage Programme. Designed for educators dedicated to closing the attainment gap, this comprehensive programme provides evidence-based strategies to support and uplift disadvantaged pupils.

Participants will explore proven interventions, data-driven approaches, and tailored teaching practices that address the unique challenges faced by Pupil Premium students. Through engaging discussions, collaborative learning, and expert guidance, educators will gain the tools and confidence to make a significant impact on student outcomes.

Invest in the future of your disadvantaged pupils. Enroll in Derby Research School's Pupil Premium Disadvantage Programme and empower your students to achieve academic excellence and personal growth.

This is day 1 of a 2 day programme. You can opt into both, or attend one of them, depending on your needs. If you are a new PP lead, we would suggest doing both days.



Who: This event is open

When: 19th November 8.30am-3.30pm

Facilitator: Tammy Elward

Where: Spencer Conference Centre (formally Portland Conference Centre),
Westwick Road, Nottingham, NG8 4BW

Bridging the Gap Day 2: How to Monitor and Evaluate Your Pupil Premium Strategy

Ensuring Equity, Elevating Potential

Day 2 is dedicated to meticulous monitoring and robust evaluation. We strive to understand the unique needs of our Pupil Premium cohort through systematic monitoring and thorough evaluation.

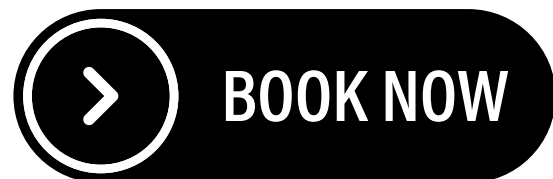
By employing data-driven approaches, regular progress assessments, and stakeholder feedback, we can ensure that our initiatives are effective and impactful. We share a range of case studies and tools to support schools' commitment to transparency and continuous improvement.

Monitoring and evaluating a strategy are crucial for several reasons:

- **Ensures Effectiveness:** Identifies what works and what needs adjustment to meet goals.
- **Informs Decision-Making:** Provides real-time data for timely interventions and optimal resource use.
- **Drives Improvement:** Encourages continuous enhancement through reflective practice and learning.
- **Engages Stakeholders:** Aligns expectations and incorporates valuable feedback for refinement.

Cost: £110

This is day 2 of a 2 day programme. You can opt into both, or attend one of them, depending on your needs. If you are a new PP lead, we would suggest doing both days.



Who: This event is open

When: 14th January 8.30am-3.30pm

Facilitator: Tammy Elward

Where: Spencer Conference Centre (formally Portland Conference Centre),
Westwick Road, Nottingham, NG8 4BW



Evidence-Informed Pupil Premium Strategy Panel Webinar

Cost: Free

Join us for a transformative webinar hosted by Derby Research School, where we bring together experts in education to discuss evidence-informed strategies for maximising the impact of Pupil Premium funding. This panel webinar will delve into proven approaches, effective interventions, and best practices derived from robust research and real-world applications.

Participants will gain invaluable insights into:

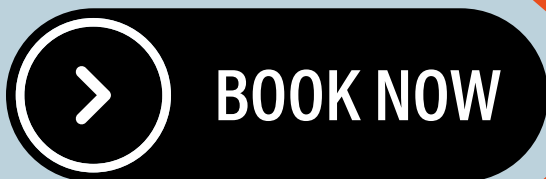
Evidence-Based Interventions: Discovering which strategies have been shown to yield the most significant improvements in educational outcomes for disadvantaged pupils.

Data-Driven Decision Making: Learning how to utilise data effectively to tailor interventions and monitor progress.

Successful Case Studies: Exploring examples of successful implementations of Pupil Premium strategies, including key lessons learned and practical tips for replication.



Webinar Event



Who: This event is open to all practitioners who are responsible for PP

When: 27th November 2024, 4pm-5pm

Where :Online

Don't miss this opportunity to engage with leading experts, exchange ideas, and enhance your understanding of evidence-informed Pupil Premium strategies. Register now to secure your place in this essential webinar that aims to empower educators and maximise the potential of every pupil.



Why Adaptive Teaching and Formative Assessment is Integral for PP/SEND Students

Cost: Free

Book on to this enlightening webinar focusing on the importance of adaptive teaching and formative assessment for Pupil Premium (PP) and Special Educational Needs and Disabilities (SEND) students. Join us for a session led by one of our ELEs, who will share their expertise on how these educational strategies can significantly enhance learning outcomes for disadvantaged and diverse learners.



Webinar Event



Who: This event is open to all practitioners primary and secondary

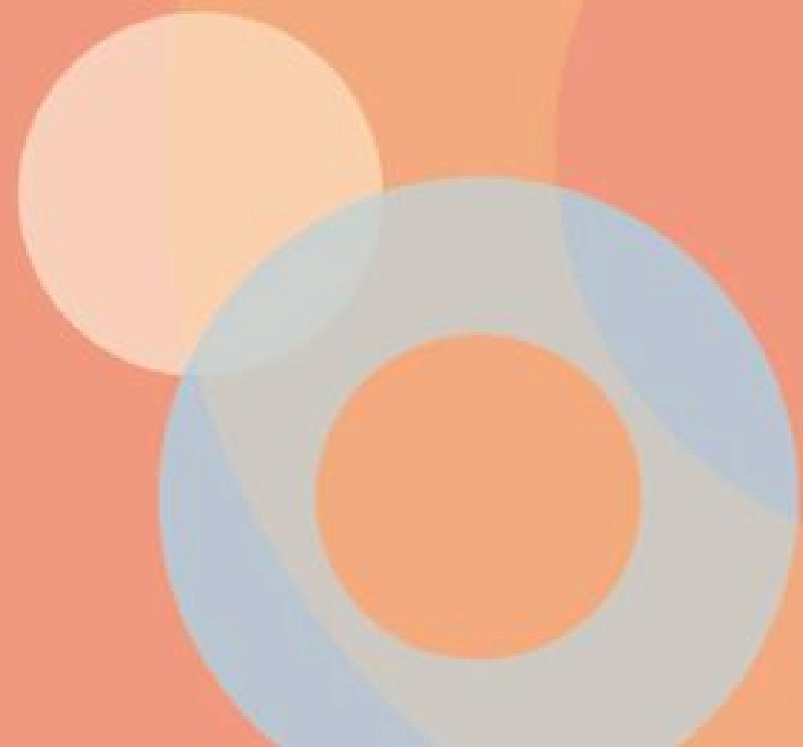
When: 4th December 2024, 4pm-5pm

Where :Online

Don't miss this opportunity to engage with leading experts, exchange ideas, and enhance your understanding of evidence-informed Pupil Premium strategies. Register now to secure your place in this essential webinar that aims to empower educators and maximise the potential of every pupil.

THEME

School Leadership Offer Implementation



THEME: School Leadership

Webinar Events

Pride and Progress - How leaders create LGBTQ+ Inclusive Spaces
 29th January
 4pm-5pm
 Dr Adam Brett

[BOOK NOW](#)

Teacher wellbeing, a snapshot of the current climate and what we can do about it (approaching half term how to look after your wellbeing)
 5th February
 4pm-5pm

[BOOK NOW](#)

YouTube Videos

- **Implementation an introduction - Recommendation 1**
- **Implementation an introduction - Recommendation 2**
- **Implementation an introduction - Recommendation 3**

[SUBSCRIBE](#)



- 1 W/C 6th January**
Professional Development, how to get all the mechanisms into gear
- 2 W/C 13th January**
Going beyond NPQs
- 3 W/C 20th January**
Coaching - how effective implementation can help other see the wood for the trees
- 4 W/C 27th January**
Pride and Progress - how to create more inclusive practices
- 5 W/C 3rd February**
What does an effective implementation plan looks like in a small school?
- 6 W/C 10th February**
Case studies of how a school has taken the implementation guidance report and put it into practice

To get weekly updates for our new podcast series, register here

[BOOK NOW](#)





Pride and Progress - How leaders create LGBTQ+ Inclusive Spaces

Cost: Free

In recent years, the push for inclusivity within educational environments has gained significant momentum. Yet, while progress has been made, there is still much work to be done to ensure that every student feels seen, supported, and safe. In this session you will explore the ways in which our schools and classrooms can make LGBTQ+ inclusive spaces. We will consider language, rights and responsibilities, best practice, and there will be time for questions and answers.



Webinar Event

Led by Dr Adam Brett



Who: This event is open to all practitioners primary and secondary

When: 29th January 2025, 4pm-5pm

Where :Online

Register now to secure your place in this essential webinar that aims to empower educators and maximise the potential of every pupil.



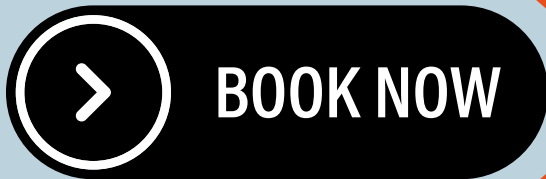
Teacher wellbeing, a snapshot of the current climate and what we can do about it

Cost: Free

The wellbeing of teachers is more critical than ever in today's educational landscape. Join us for a comprehensive webinar that delves into the current state of teacher wellbeing, the challenges educators face, and actionable strategies to support and enhance their mental and emotional health.



Webinar Event



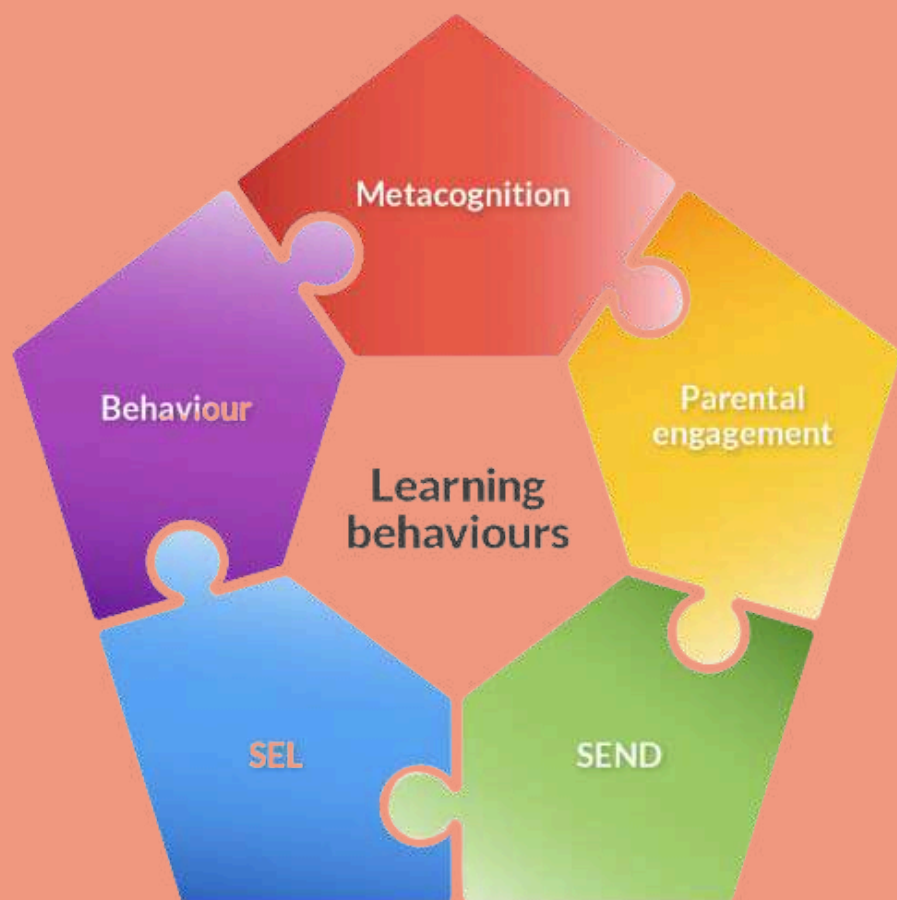
Who: This event is open to all practitioners primary and secondary

When: 5th February 2025, 4pm-5pm

Where :Online

Register now to secure your place in this essential webinar that aims to empower educators and maximise the potential of every pupil.

THEME: Learning Behaviours



THEME: Learning Behaviours

Training Events

Graphic Organiser

12th February

Tammy Elward & Mary Alice Lloyd

Cost: £110



Metacognition

6th November, 26th November, 16th January

Tammy Elward & Mary Alice Lloyd

Cost: £250



Are you eligible for a discounted or fully funded place? [LEARN MORE](#)




THEME: Learning Behaviours

Webinar Events

Supporting the attendance of pupils with SEND, how to modify provision accordingly

19th March
4pm-5pm
Dylan Murphy

 **BOOK NOW**

Cost: Free



YouTube Videos

- **5 a day** - Scaffolding
- **5 a day** - Modelling and Explicit Instruction
- **5 a day**- formative assessment and feedback
- **Applying the Principles of Cognitive Science** - Curriculum


 **SUBSCRIBE**

NEW

PODCAST  

- 1** **W/C 24th February**
Attendance: How to improve the attendance/ provision of children at risk of persistent absence/ school refusal
- 2** **W/C 3rd March**
What is behaviour for learning and how can it help teachers to encourage positive behaviour?
- 3** **W/C 10th March**
Habits of Success, PLUS interview with Harry Fletcher Wood
- 4** **W/C 17th March**
How does a shared language and culture set standards for behaviour within your school's community - a case study
- 5** **W/C 24th March**
Rising Tide Floats all Boats - Adaptive Teaching for ALL
- 6** **W/C 31st March**
Monitoring and Evaluation on learning behaviours implementation with school leaders

To get weekly updates for our new podcast series, register here

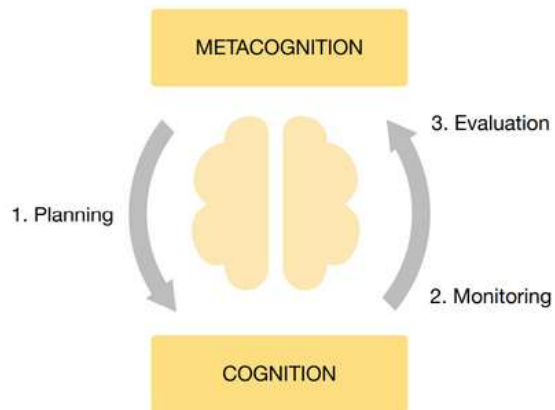
 **BOOK NOW**



Metacognition - Short Course



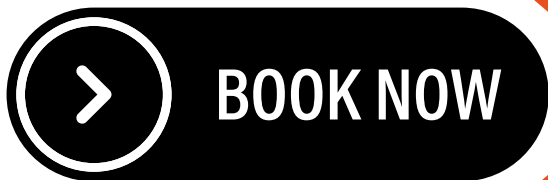
Metacognition, or "thinking about thinking," is a powerful strategy that can significantly improve students' learning outcomes. By teaching students to be aware of their cognitive processes, educators can help them develop critical self-regulation skills, enhance their understanding, and improve their academic performance. This session will explore the concept of metacognition, its benefits, and practical strategies for fostering metacognitive skills in the classroom.



Objectives

Understand the concept and importance of metacognition in education.
Learn about the components of metacognitive regulation and knowledge.
Explore practical strategies for integrating metacognitive practices into classroom instruction.

Cost: £250



When: 6th November, 26th November, 16th January 1pm-4pm
Where: Spencer Conference Centre (formally Portland Conference Centre),
Westwick Road, Nottingham, NG8 4BW

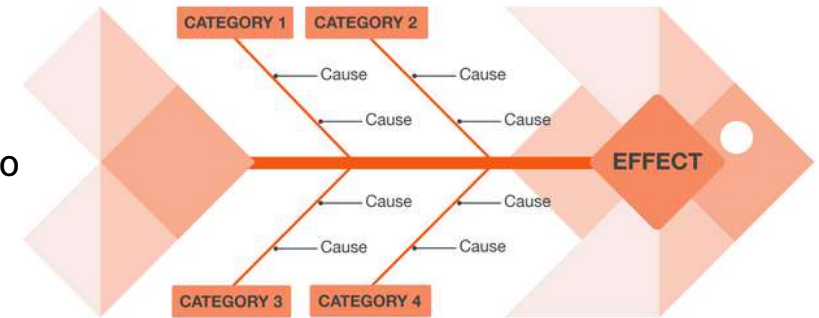
Graphic Organisers



Graphic organisers guide learners' thinking as they fill in and build upon a visual map or diagram. Mentioned in the EEF Metacognition Guidance Report, they are some of the most effective visual learning strategies for students and are applied across the curriculum to enhance learning and understanding of subject matter content – they help the learner build and connect learning and structure thinking.

This day is aligned with the Ofsted and ECF Framework and covers key topics to support learners to:

- Actively present and structure material
- Make enduring connections that foster understanding helping to integrate new knowledge into larger concepts
- Structure elements to both facilitate memorising of information and to understand relationships between parts and the whole
- 'Chunk' new learning to reduce demand on memory capacity
- Know how to learn and study effectively



Cost: £110

BOOK NOW

When: 12th February 2025, 9.30am-3.30pm

Where: (formally Portland Conference Centre),
Westwick Road, Nottingham, NG8 4BW

Who: This event is open to practitioners from all phases and all settings.

Facilitator: Mary-Alice Lloyd



Supporting the attendance of pupils with SEND

Cost: Free

Join us for an empowering webinar dedicated to supporting pupils with Special Educational Needs and Disabilities (SEND). This session will equip educators, school leaders, and support staff with effective strategies to create an inclusive and supportive learning environment for all students.

Led by Dylan Murphy



Webinar Event



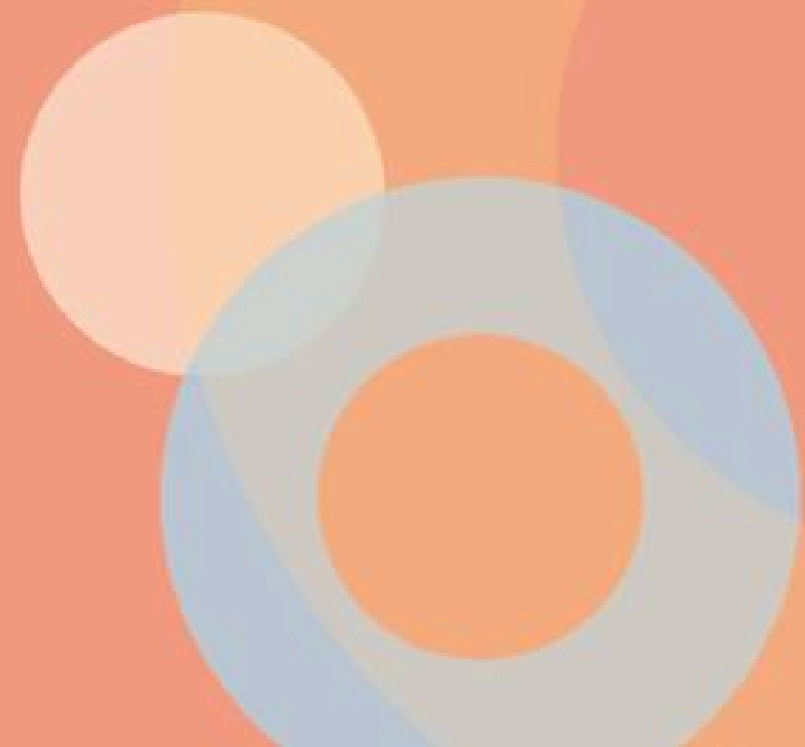
Who: This event is open to all practitioners primary and secondary

When: 19th March 2025, 4pm-5pm

Where :Online

Register now to secure your place in this essential webinar that aims to empower educators and maximise the potential of every pupil.

THEME: Maths



THEME: Maths

Webinar Events



YouTube Videos

- Maths Videos with Lincolnshire Research School

 SUBSCRIBE

NEW

PODCAST



1

W/C 28th April

Problem solving in secondary (mathematical thinking through the lens of problem solving)

2

W/C 5th May

Curriculum continuity in Early Years for Mathematics/ Working with Early Years TAs in Maths

3

W/C 12th May

Use of Manipulatives for KS3 - primary to secondary academic transition for all

4

W/C 19th May

Headteacher to share a case study of Number Mastery and how it has supported a mainstream school with high % of SEND - Primary

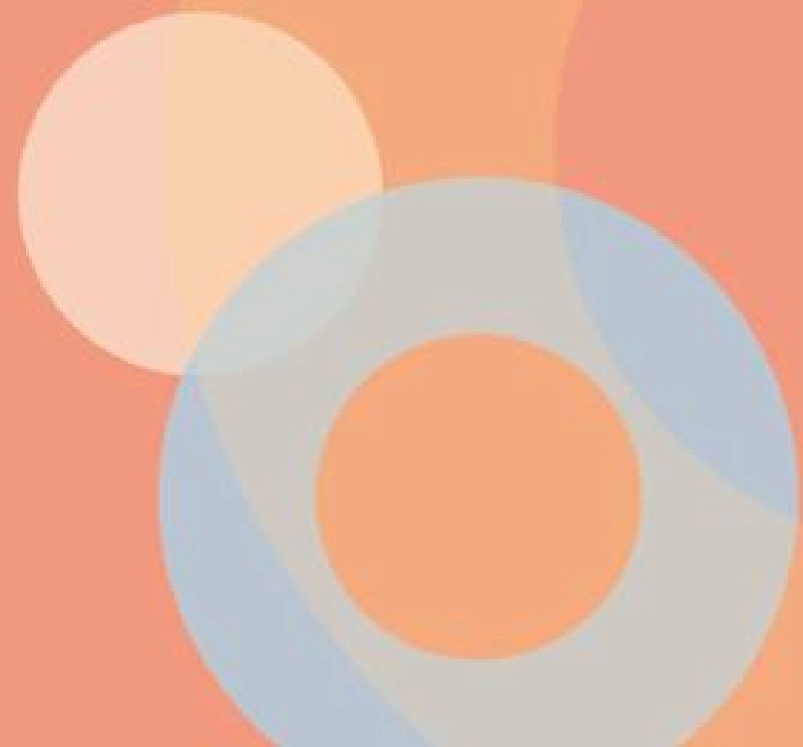
To get weekly updates for our new podcast series, register here



BOOK NOW




THEME: Using Research



THEME: Using Research

Webinar Events

Sustainable School Improvement
11th June
4pm-5pm
Ian Armstrong

 **BOOK NOW**



YouTube Videos



 **SUBSCRIBE**

NEW

PODCAST



1

W/C 2nd June

Research Evidence Guidance Report - how to support leaders create a shared language and approach

2

W/C 9th June- SETTING 1

ELE Case Study on specialism and implementation of a key thread in their setting, key learning and successes to share

3

W/C 16th June- SETTING 2

ELE Case Study on specialism and implementation of a key thread in their setting, key learning and successes to share

4

W/C 23rd June- SETTING 3

ELE Case Study on specialism and implementation of a key thread in their setting, key learning and successes to share

5

W/C 30th June- SETTING 4

ELE Case Study on specialism and implementation of a key thread in their setting, key learning and successes to share

6

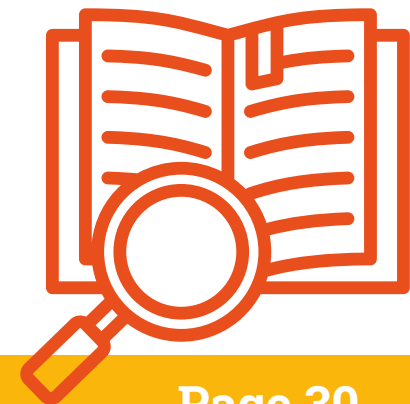
W/C 7th July

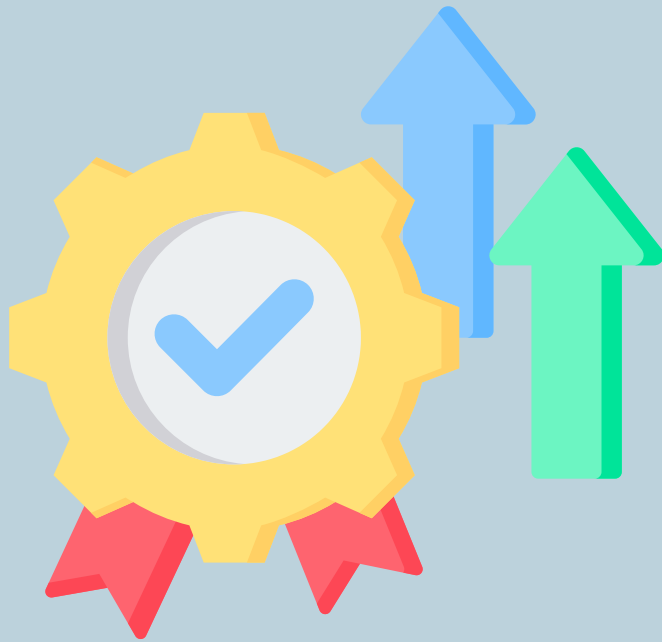
Final podcast of the year sharing a look back on the year at the research school and a look forward to next year

To get weekly updates for our new podcast series, register here



BOOK NOW





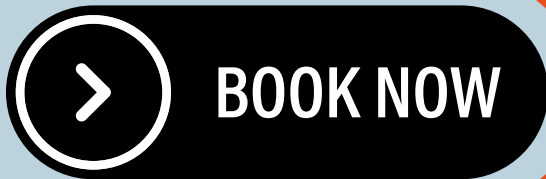
Sustainable School Improvement

Cost: Free

Join us for an insightful webinar focused on sustainable school improvement strategies, designed to empower educators and school leaders with practical approaches to fostering continuous growth and success.



Webinar Event



Who: This event is open to all practitioners primary and secondary

When: 11th June 2025, 4pm-5pm

Where :Online

Register now to secure your place in this essential webinar that aims to empower educators and maximise the potential of every pupil.

NETWORKS: Primary Subject Leader Networks



Primary Subject Leader Networks

BOOK HERE 

Welcome to our Primary Subject Leader Network Meetings, where primary school subject leaders connect, collaborate, and grow. These meetings, hosted from 1.30-3.30pm, offer a supportive environment to share best practices, discuss challenges, and stay updated on the latest educational developments. By joining, you will enhance your expertise and build a network of like-minded peers dedicated to excellence in education. Join us to inspire and be inspired as we elevate the quality of primary education together.



English

Facilitator: Tracey West

Venue: Spencer Conference Centre

Dates: 1st Oct, 21st Nov, 13th March, 2nd June



Computing

Facilitator: Verity Lee

Venue: Sunnyside Spencer Academy

Dates: 3rd Oct, 16th January, 24th April, 3rd July

Science

Facilitator: Rachel Bird

Venue: Wyndham Spencer Academy

Dates: 18th Sept, 4th Dec, 26th February, 2nd July



Outdoor Learning

Facilitator: Anna Bayliss

Dates: 16th October (Chetwynd Spencer), 24th January (Spencer CC), 2nd May (Hilton), 4th July (Spencer CC)



Art

Facilitator: Katie Tildesley

Venue: Wyndham Spencer Academy

Dates: 10th October, 30th January, 3rd April, 5th June



Early Years

Facilitator: Aimee Allen & Nichola Quenby

Venue: Spencer Conference Centre

Dates: 23rd Sept 25th November, 25th Feb, 7th July



Geography

Facilitator: Laura Parkin

Venue: Ashwood Spencer Academy

Dates: 17th October, 6th February, 1st May, 10th July



Modern Foreign Language

Facilitator: Vicky Cavill

Venue: Spencer Conference Centre

Dates: 18th October, 20th January, 24th March, 5th June



History

Facilitator: Rebecca Harries

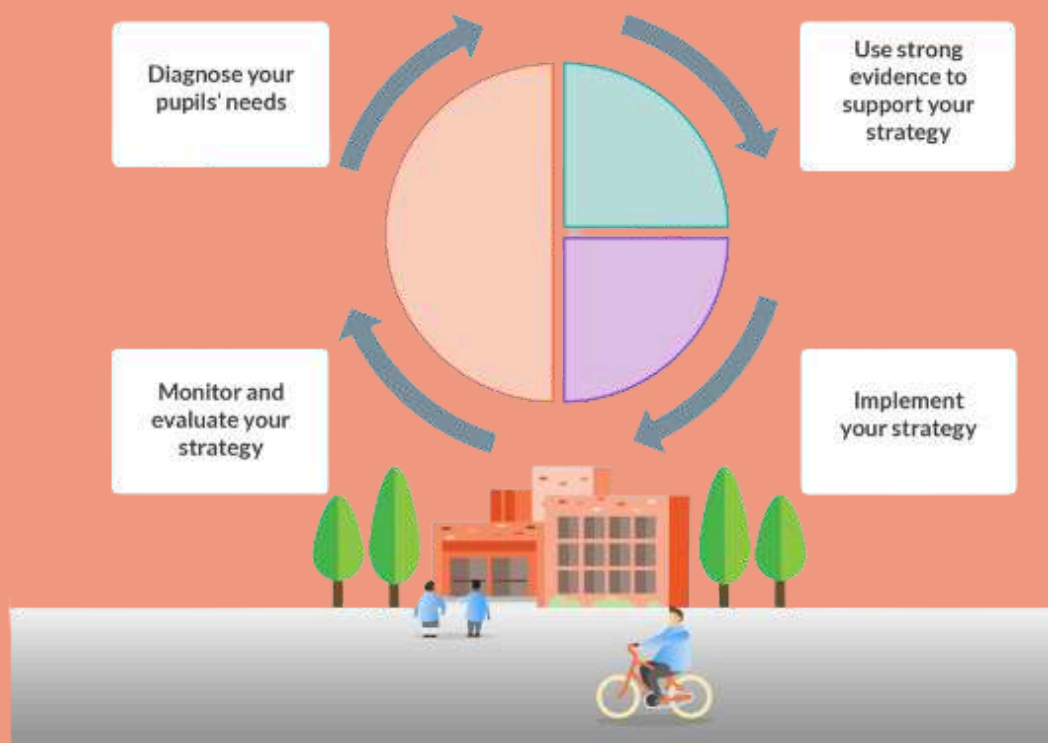
Venue: Wyndham Spencer Academy

Dates: 26th Sept, 23rd Jan 24th April, 12th June

1.30pm - 3.30pm

Cost: £800 Full Package or £250 per subject

SCHOOL SUPPORT: Pupil Premium Review



SCHOOL SUPPORT

Pupil Premium Review

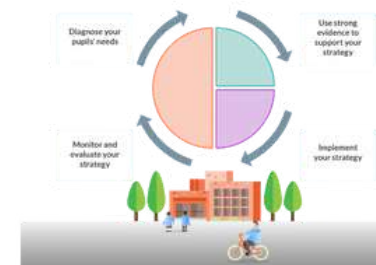
Pupil Premium (PP) funding is a crucial resource aimed at improving the educational outcomes of disadvantaged students. However, to ensure this funding achieves its intended impact, schools must conduct regular and thorough PP reviews. This process not only holds schools accountable but also helps identify effective strategies and areas for improvement.



PP reviews are essential for a number of reasons:

1. **Accountability and Transparency:** They ensure that the funds are used effectively and transparently.
2. **Targeted Support:** Reviews help in identifying which strategies are working and which are not, allowing for better-targeted interventions.
3. **Continuous Improvement:** Regular reviews promote a culture of continuous improvement in addressing the needs of disadvantaged students.

For more details please contact Tammy Elward or Amy Ford
tammy.elward.derby@researchschool.org.uk or
amy.ford.derby@researchschool.org.uk



SCHOOL SUPPORT

Bespoke Training

Bespoke training offers a powerful solution for schools seeking to provide high-impact professional development for their staff. By tailoring training to the unique needs and goals of a school, bespoke programs ensure relevance, engagement, and sustainable improvement. Investing in customized PD not only supports teachers and leaders in their professional growth but also fosters a positive and effective learning environment for all students.

Embrace the potential of bespoke training to drive meaningful and lasting change in your school.



For more details please contact Tammy Elward or Amy Ford
tammy.elward.derby@researchschool.org.uk or
amy.ford.derby@researchschool.org.uk

Training Programme Discounts



Your school may be eligible for free places or discounts - please check our offers below. When securing your place, please indicate on the booking form.



ELE Partner Schools: All ELE partner schools have fully funded access to our programmes for up to 10 places across the suite



Spencer Partner Schools: All Spencer Academies Trust partner schools have fully funded access to our programmes (one free place per programme)



Priority Literacy Targeted School: All targeted school can access our literacy programmes fully funded.



Returning Customer Offer: If you have engaged with any of our paid courses previously, we are pleased to offer you a 15% discount on all our programmes



Cheeky Multi-Buy: 3 for 2 when you book more than 2 delegates onto a programme

[return to contents page](#)



Wellbeing and Adult Safeguarding

As an adult learning provision, we have a dedicated safeguarding team. Our social media communications also sign post to key themes around wellbeing along with the signposts for support in our **Mental Health and Wellbeing Booklet**.



Caroline Arnold
Designated Safeguarding Lead
carnold@spencertrust.org.uk

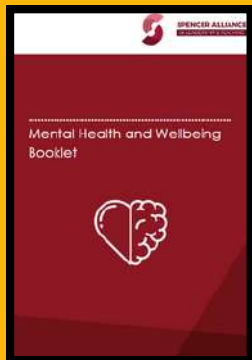


Vicki Ilic
Mental Health and Wellbeing First Aider
Vilic@spencertrust.org.uk



Tammy Elward
Prevent Lead and LGBTQIA+ Link
telward@spencertrust.org.uk

Explore our Mental Health and Wellbeing Booklet



Follow us on X to see our wellbeing and mental health posts



Reporting a Concern for our Adult Learners

Option 1: Please email Caroline, our DSL
carnold@spencertrust.org.uk

Option 2: Please log a concern using our reporting form (QR code below)



Supported by the Education Endowment Foundation

Safeguarding is everyone's responsibility

info.derby@researchschool.org.uk



Derby
Research
School

Supported by the Education Endowment Foundation