

Using *Check Link Connect* questions during reading

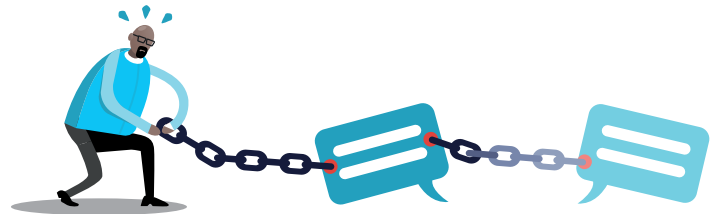
6B

Link questions

'Link' questions help pupils make *local inferences* during reading.

We, as expert readers, might see pronouns such as 'it', 'he', 'they', discourse connectors such as 'therefore' or 'hence', or conjunctions such as 'although', 'while', 'since'. We automatically understand how these words connect parts of a sentence and enable ideas to be tracked across a paragraph.

For less able readers, this process needs to be made explicit. Asking questions that encourage local inferences across texts where different names for the same idea, event, character, might be used, is a promising approach.



*The First World War was a global war originating in Europe that lasted from 28 July 1914 to 11 November 1918. Also known as the Great War or 'the war to end all wars', it led to the **mobilisation** of more than 70 million military personnel. It was one of the deadliest conflicts in history, with an estimated 8.5 million combatant deaths and 13 million civilian deaths.*

After reading this paragraph, we might ask the question 'What does 'it' refer to?' in order to clarify understanding as to which event is being referred to.

If this seems overly simplistic, it becomes clear why knowing this is vital if we were to ask the question 'Give two consequences of WWI!'

If a pupil were to struggle with this question, then we might need to direct their attention to the phrase 'with an', or re-read the latter half of the sentence to help them locate the relevant details.