

The WORD WISE approach



**TOWN END
RESEARCH SCHOOL**
At WISE Academies



Word Identification

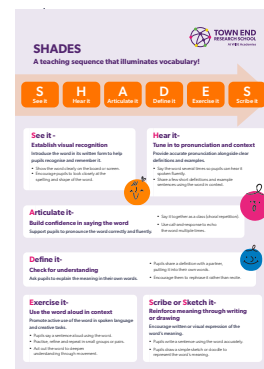
Identify high utility words from the curriculum – consider usefulness for reading, writing, talk and making links to previous or new learning

- Tier 1 - basic words commonly used in spoken language
- Tier 2 - high frequency words that are found across contexts - will enhance reading/writing/talk
- Tier 3 - words that appear in specific subjects or fields of study



Instruct

- Pre-empt and pre-teach difficult language to be encountered
- Tell pupils what words mean - don't play the guessing game
- Phonology: Clap, rhyme, initial sound
- Morphemic analysis – dissect the word (base/prefix/suffix)
- Context clues – clarifying strategies
- Experience it: Do it. Feel it. See it. Hear it. Taste it. Smell it.
- Song or rap
- Write it on the working wall
- Include selected words in mentor texts
- Follow the **SHADES** sequence



Spark Interest

- Practical application in context
- Collaborative activities
- Teach one another
- Adults and pupils use the word many times in different contexts
- Investigations
- Reinforce, connect and make links throughout the day
- Play games/low stakes quizzes/competitions



Encounter

- Use the words. Revisit regularly throughout the year
- Notice, highlight and acknowledge when pupils use the words well independently in real life contexts
- Reviewing words helps words fix into long term memory
- Share the words with adults at home
- Encourage parents and children to use the words at home