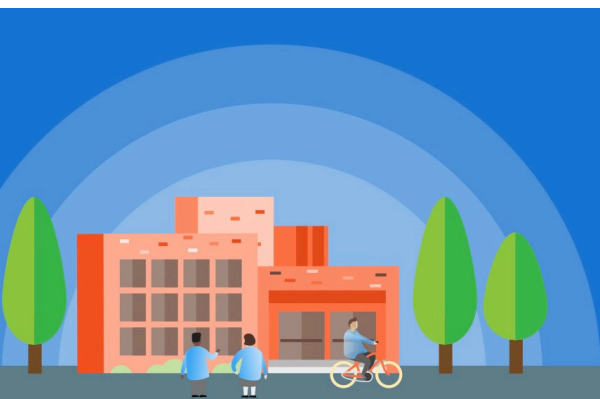


ADDRESSING EDUCATIONAL DISADVANTAGE THROUGH SOCIAL AND ACADEMIC INCLUSION



Marc Rowland
National Pupil Premium Expert



Hannah Cox
Deputy Director Devon
Research School



Katie White
Deputy Director Devon
Research School



Jon Eaton
Director Devon
Research School

Join us for a comprehensive professional development programme designed to tackle the root causes and consequences of educational disadvantage.

Through a focus on **social and academic inclusion**, we will help your school deepen its understanding of socio-economic disadvantage and strengthen your approach to supporting all pupils to thrive.

This programme will equip your team to:

- ✓ Develop inclusive teaching practices that meet diverse learning needs
- ✓ Design effective targeted academic support, enrichment, and pastoral care
- ✓ Improve attendance and foster positive parental engagement
- ✓ Reflect on and enhance your school's approach to equity and inclusion
- ✓ Create or refine your **Pupil Premium Strategy**, ensuring it is evidence-based, coherent and impactful

Who is it for?

School leaders, SENCOs, pastoral teams, and anyone involved in planning and delivering provision for disadvantaged pupils.

Why join?

Educational disadvantage is complex, but action can be powerful when it is intentional, strategic, and inclusive. This programme provides a structured, practical framework for making lasting change – helping every child succeed, regardless of background.

The programme features two online sessions and three face-to-face sessions. In the face-to-face sessions, training will be delivered in the AM sessions and the PM is free for networking or individual support.

Tuesday 10 June (online) 15:40 - 17:00

Session 1: baseline: attainment, attitudes, beliefs and assumptions

Tuesday 8 July (face-to-face) 9:30 - 12:30, Exeter Racecourse

Session 2: understanding low family income and its impact, assessment of need, empowering staff

Friday 17 October (face-to-face) 9:30 - 12:30, Exeter Racecourse

Session 3: getting it right in the classroom: inclusive teaching and learning, targeted academic support

Tuesday 25 November (face-to-face) 9:30 - 12:30, Exeter Racecourse

Session 4: enrichment, pastoral care, persona

Wednesday 10 December (online) 15:40 - 17:00

Session 5: attendance and parental involvement

Cost: £200 Additional delegate from the same school £100

Sign up here: <https://forms.gle/JsEd6Hoq6USN8tL58>

Email: alison.king@kingsbridgecollege.org.uk



Education
Endowment
Foundation