

THE PUPIL PREMIUM STRATEGY:

FROM RHETORIC TO REALITY

This programme is designed to support schools with the:

- Resubmission of their PP strategy in December 2022
- Implementation and review of their PP strategy



The programme rationale

This three day, face-to-face PD programme is designed to enable schools to explore practical, evidence-informed approaches for breaking the link between family income and educational attainment, and in doing so raising the attainment of children most at risk of underachieving.

Engaging with the best available evidence on high quality teaching, whole school approaches and targeted academic support, this programme provides support for school leaders to implement a Pupil Premium strategy so that all pupils can flourish.

This PD programme comprises three face to face training days, webinars and intersession tasks.

The programme structure

Launch webinar: 28th September 2022, 3.30pm - 5.00pm

(This session is for school leaders and programme participants)

Day 1: Friday 7th October 2022, 9.30am - 3.00pm

- The role of evidence in meeting the needs of those most at risk of underachieving

Webinar: Wednesday 2nd November 2022, 3.30pm - 5.00pm

Day 2: Friday 25th November 2022, 9.30am - 3.00pm

- Analysing existing issues and strategies
- The tiered approach
- Identifying solutions

Webinar: Wednesday 7th December 2022, 3.30pm - 5.00pm

Webinar: Wednesday 18th January 2023, 3.30pm - 5.00pm

Day 3: Friday 27th January 2023, 9.30am - 3.00pm

- Preparing through implementation planning
- Writing an implementation plan
- Understanding effective delivery, monitoring and evaluation
- Follow-on support

Webinar: Wednesday 1st February 2023, 3.30pm - 5.00pm

Led by

John Rodgers and Andy Brumby,
Co-Directors Cornwall Associate
Research school (CARS)

And supported by:

Marc Rowland: National expert and
published author in the effective use
of the Pupil Premium

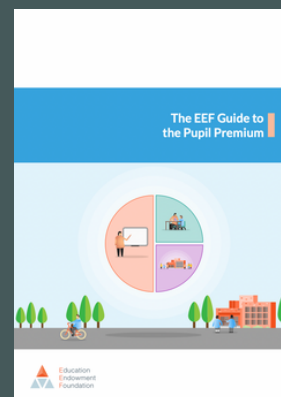
**Hannah Crewdson and Sonya
Herbert** (CARS)

Helen Thorneycroft and Jon Eaton
(Kingsbridge Research School)

Cost and Location

**Programme costs, including lunch
and refreshments on Days 1, 2 and
3: £100 per person.**

**Days 1, 2 and 3 are face to face and
will be hosted at St Austell
Conference Centre, PL25 4FD**



**Use the link below to register or
contact:**

Alison.king@kingsbridgecollege.org.uk



REGISTER
[HTTPS://FORMS.GLE/TAM2TSU6TVCVE5QY7](https://forms.gle/TAM2TSU6TVCVE5QY7)