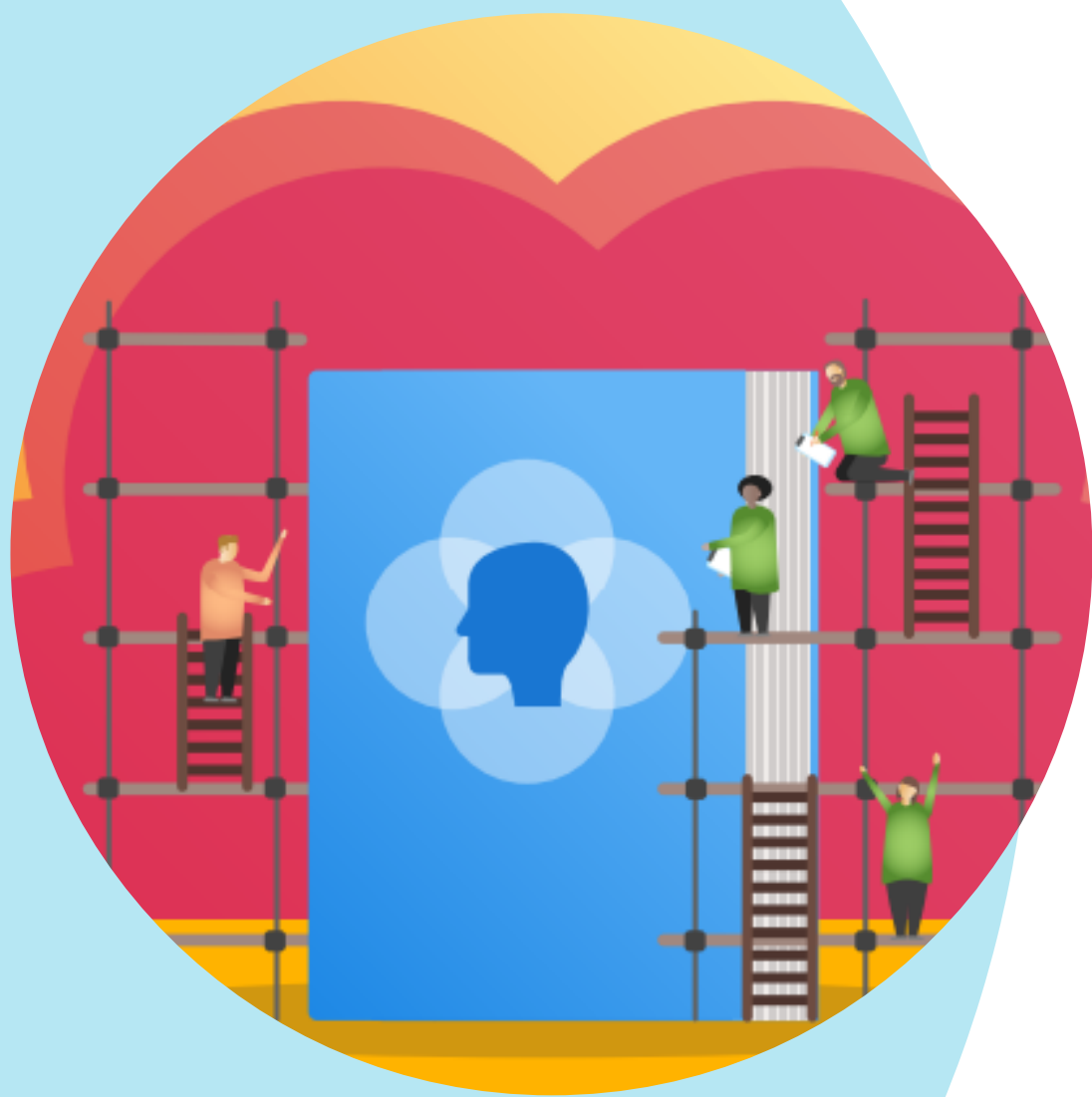


SEN IN MAINSTREAM SCHOOLS MODULAR TRAINING PROGRAMME



PROGRAMME LEAD:

CLARE BELLI - HEAD OF SOUTHAMPTON INCLUSION PARTNERSHIP AND HISP RS EVIDENCE LEAD IN EDUCATION FOR SEND



Date	Time	Location
Monday 18th October 2021	2-4pm	Online via zoom
Monday 15th November 2021	2-4pm	Face to Face at HISP Learning Partnership, Tanners Brook Primary School
Monday 17th January 2022	2-4pm	Online via zoom
Monday 31st January 2022	2-4pm	Online via zoom
Monday 14th February 2022	2-4pm	Face to Face at HISP Learning Partnership, Tanners Brook Primary School
Monday 7th March 2022	2-4pm	Online via zoom

PROGRAMME OVERVIEW:

The EEF Guidance report offers five evidence-based recommendations to support pupils with SEN, providing a starting point for schools to review their current approach and practical ideas they can implement. The report comes from a review of the best available international research and consultations with teachers and other experts. The overriding message from the report is a positive one. It is tempting to talk about the challenge of SEN as a specific and distinct issue. Yet, far from creating new programmes, the evidence tells us that teachers should instead prioritise familiar but powerful strategies, like scaffolding and explicit instruction, to support their pupils with SEN. This means understanding the needs of individual pupils and weaving specific approaches into everyday, high quality classroom teaching—being inclusive by design not as an afterthought. This programme will support school leaders to explore current practices, identify key priorities, and use the best bets from evidence to inform the development of an implementation plan.

COST:
£220 Per School

We recommend 2 delegates per school



TO REGISTER:
<https://forms.office.com/r/vjVwGyactq>
or scan the QR code



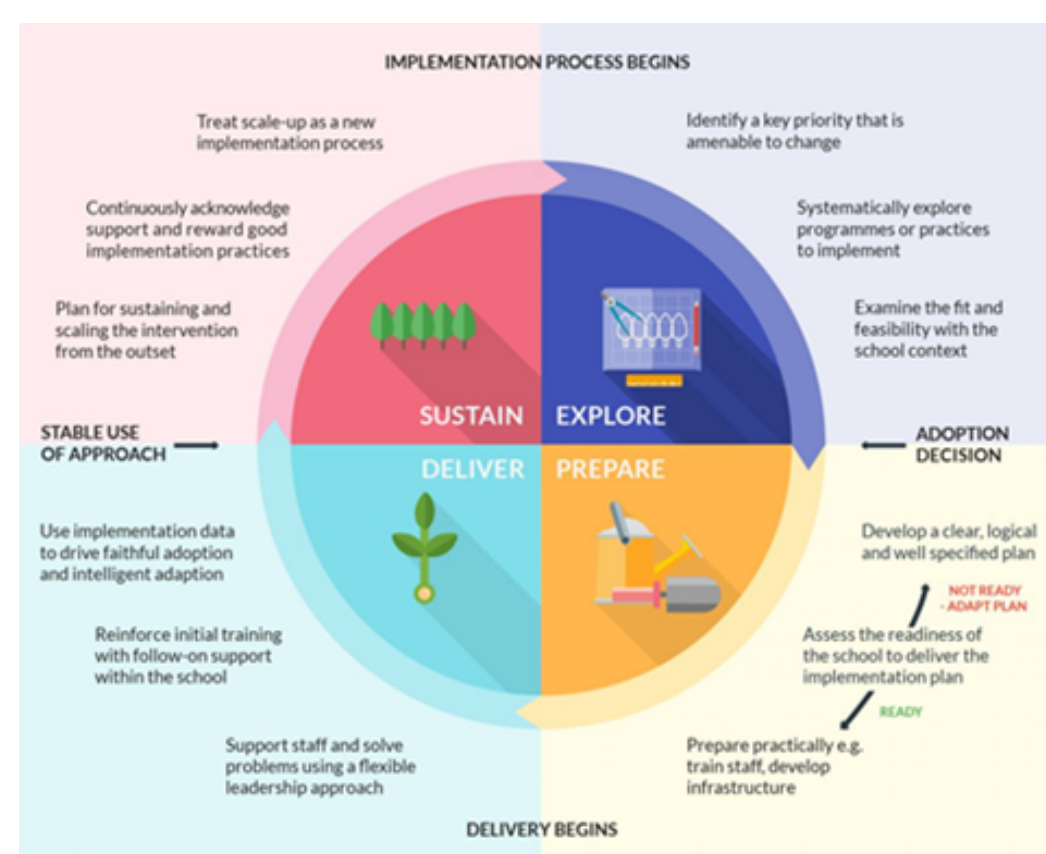
PROGRAMME STRUCTURE

Throughout the 6 modules, programme participants will reflect on current practices, identify priorities, and be supported to explore the evidence base to inform decisions. Participants will then be guided through the process of writing of an implementation plan to support school improvement. Gap tasks will be set in-between modules to support reflection, planning and effective implementation.

The aim is for this programme to involve a blended approach with a mix of face to face and online sessions. A final decision about the face-to-face sessions will depend on the locality of the participants and any updated Covid restrictions.

WHO IS IT FOR?

This programme is suitable for headteachers, SENCos, Teaching and Learning school leads, senior leaders, and middle leaders.



FEEDBACK FROM PREVIOUS PARTICIPANTS

This programme has enabled me to make some big changes strategically in my school. I feel the audit has helped me identify key strengths and areas for development. I also feel I have a plan to move forward.

Auditing the practice in my school enabled me to reflect and identify the pockets of strong practice as well as areas that could be improved. e.g. using high quality teaching checklist when monitoring the planning or coaching at the planning stage

There was a good mix of listening, information, thinking, reflection and discussion. It has been really good to network.

I have changed the way I manage my SEND Surgeries (staff sessions) to ensure that they come to me having tried different strategies rather than come to me with the expectation that I will 'fix' everything.

